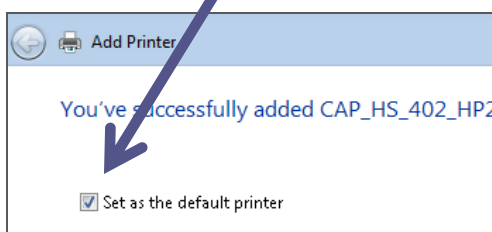
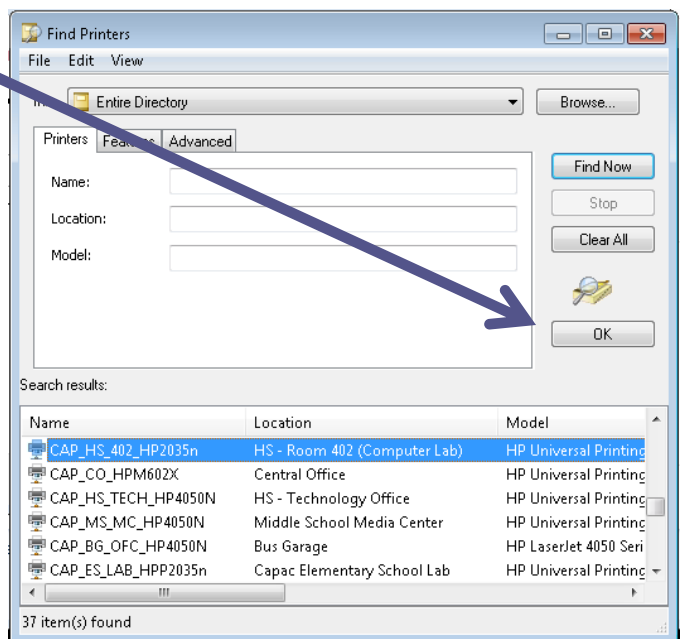
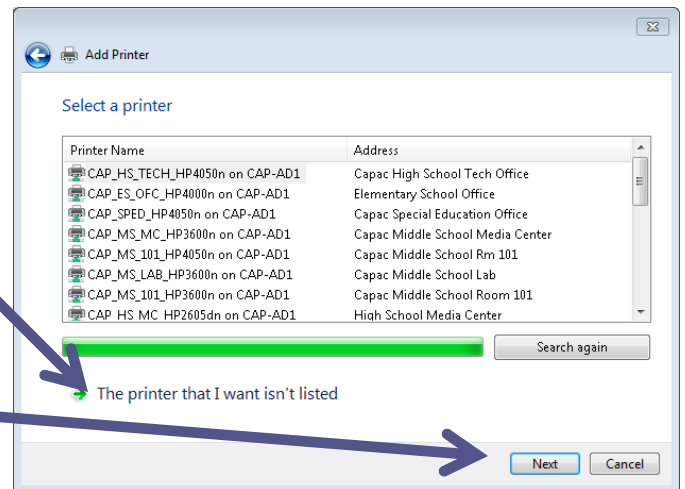
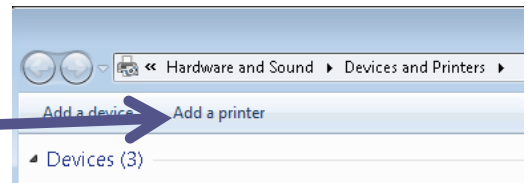


# Adding a Network Printer

You can add other printers to your computer by following the steps below.

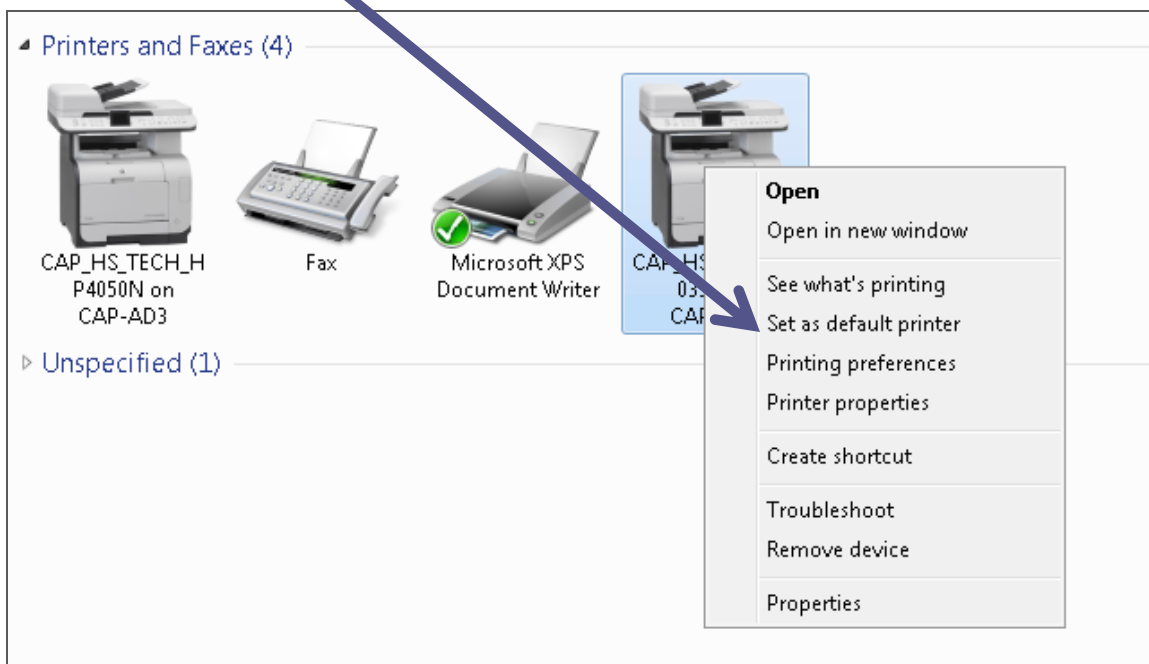
1. Click on the **Start Menu**.
2. Click **Device and Printers**.
3. Click **Add a Printer**.
4. Click **Add a Network, Wireless, or Bluetooth Printer**.
5. Click **The Printer that I want isn't listed**.
6. Select **Find a Printer in the Directory...**
7. Click **Next**.
8. Select the Printer that you want to add and click **OK**.
9. Click **Next**.
10. Click **Finish**.
11. If you do NOT want this printer to be your default printer, then uncheck the box "Set as the default Printer"



# Setting Your Default Printer

You can set your default printer by following the steps listed below.

1. Click on the **Start Menu**.
2. Click **Device and Printers**.
3. Right click on the Printer you want to set as Default, click **Set as default printer**.



A green check mark will now appear next to your default printer.

